



# Insulated Structures

*Efficiency At Work*

## HOT TO GO – WALK AROUND



Standard Specifications	
• Salad Bowls	• 2 x Probes (Air Off & Defrost)
• Lids	• Electronic Display
• Ticket Rails	• Canopy LED Lights
• Shaded Pole Fans	

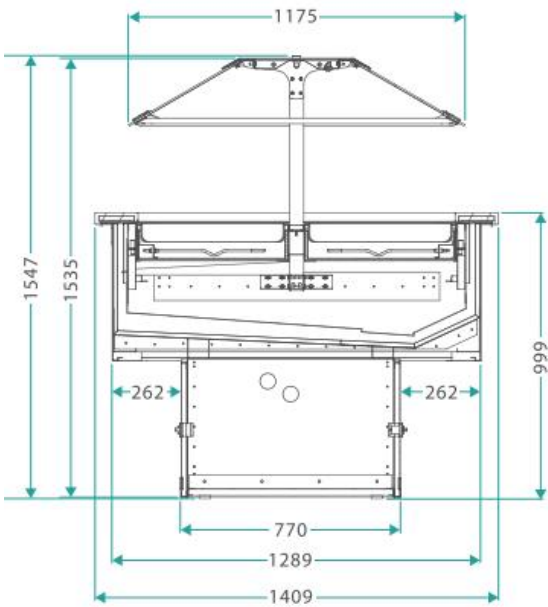
*Leaders in world class innovation for bespoke end to end energy efficient refrigeration solutions*



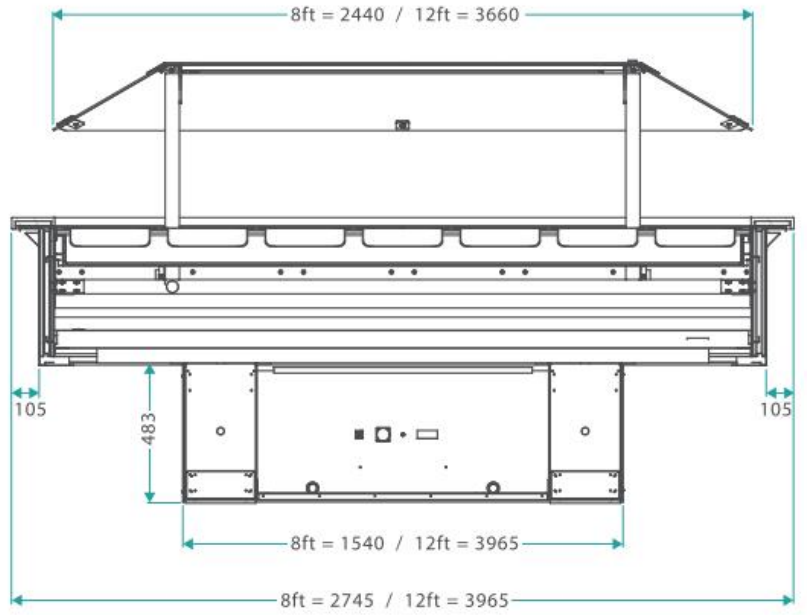
# Insulated Structures

*Efficiency At Work*

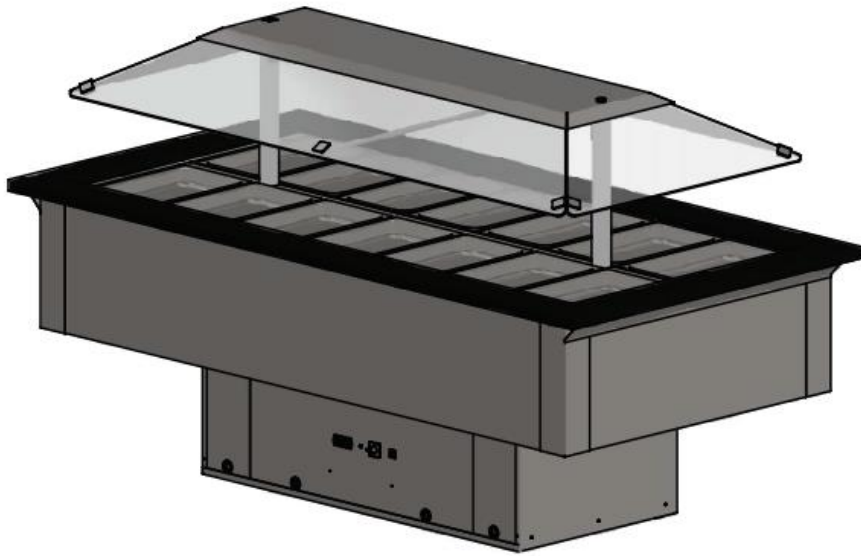
## HOT TO GO WALK AROUND CONT:



SIDE SECTION VIEW



FRONT SECTION VIEW



Heating Requirements
Product temperature
65°C

Physical Properties	
Size	TDA (m <sup>2</sup> )
8ft	1.65
12ft	2.27

Electrical Specifications	
Heaters Dry Elements	Lighting Case (LED)
14 x 500W	2 x 17W = 34W
20x 500W	2 x 30W = 60W

*Leaders in world class innovation for bespoke end to end energy efficient refrigeration solutions*



Insulated Structures  
*Efficiency At Work*